

E-RIHS UK role and data requirements

14-08-2024

Dr. Josep Grau-Bove, National Coordinator
Dr. Richard Higham, Research Fellow
UCL Institute for Sustainable Heritage



IMPLEMENTATIONPhase



Seminar plan



IMPLEMENTATION Phase

- What is an ERIC and what is E-RIHS?
- The benefits of ERIC membership
- What is the role of the E-RIHS UK?
- The data requirements of E-RIHS UK



E-RIHS.uk

EUROPEAN RESEARCH INFRASTRUCTURE
FOR HERITAGE SCIENCE

What is an ERIC?



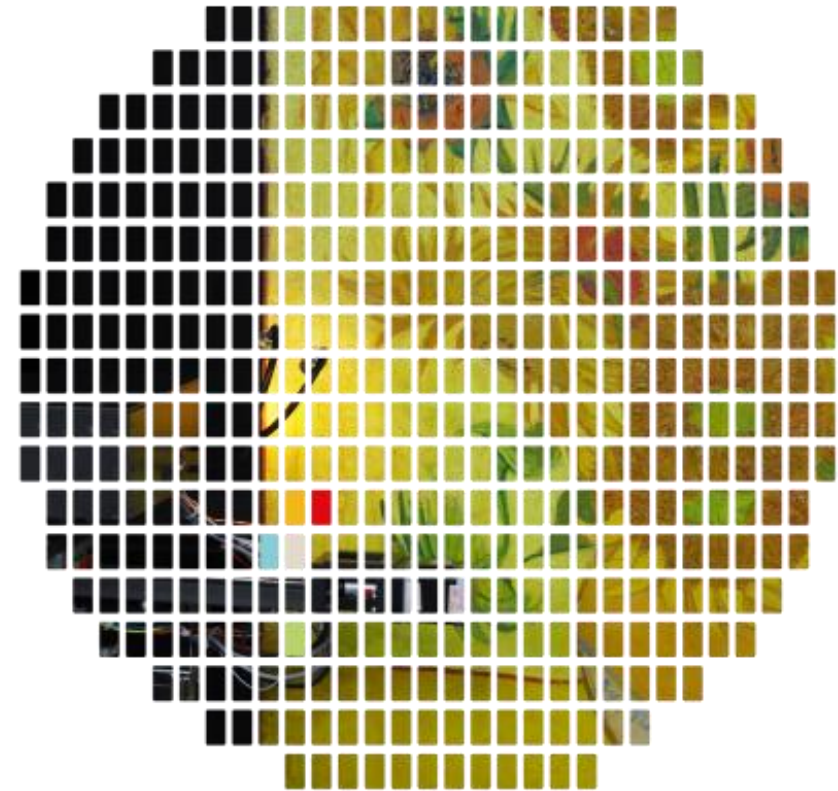
IMPLEMENTATION Phase

“European Research Infrastructure Consortium” (ERIC) are:

- Legal entities recognised across the EU
- Comparable to small intergovernmental organisations
- Non-profits
- Fully dedicated to research

They provide:

- Flexible governance structures
- Perennial support for a research community
- Benefits and services to their members
- VAT exemptions



E-RIHS.uk

EUROPEAN RESEARCH INFRASTRUCTURE
FOR HERITAGE SCIENCE

The E-RIHS ERIC



IMPLEMENTATION Phase

E-RIHS is the European Research Infrastructure for Heritage Science.

Created to support the Heritage Science research community in heritage interpretation, preservation and documentation, innovation and management. E-RIHS will stop the fragmentation of the industry and develop a new paradigm in the heritage science field.

The community has worked together since 1999 when the first European project started. Numerous institutions across Europe are joined together in this community and have managed successful projects such as

- EU-ARTECH**
- CHARISMA**
- IPERION CH**
- IPERION HS**
- ERIHS IP**
- And SSHOC**

In 2016 E-RIHS began the process of becoming a ERIC and now in 2024 this is at its final stages with E-RIHS soon to become a ERIC with full legal capacity

What E-RIHS can offer?



IMPLEMENTATION Phase

E-RIHS ERIC members benefit from:

- Internal access, to be regulated by a specific policy, to E-RIHS ERIC expertise exclusively offered by the E-RIHS ERIC Consortium, to research facilities and infrastructure management best practices
- Will be able to use data and KPI from E-RIHS ERIC to aid understanding about services
- Access to consortia applying for funding using the E-RIHS ERIC Label
- Facilities enabling them to jointly develop research and project consortia, courses or dissemination/engagement activities
- Option to have in-house training recognized and integrated into the E-RIHS training system (HS Academy)
- Participation in fora regulating access and standards of quality
- Association with the E-RIHS ERIC Label



E-RIHS is open to the adhesion or association of EU and non-EU countries and organizations, towards the long-term objective of operating at the global level

The structure of E-RIHS



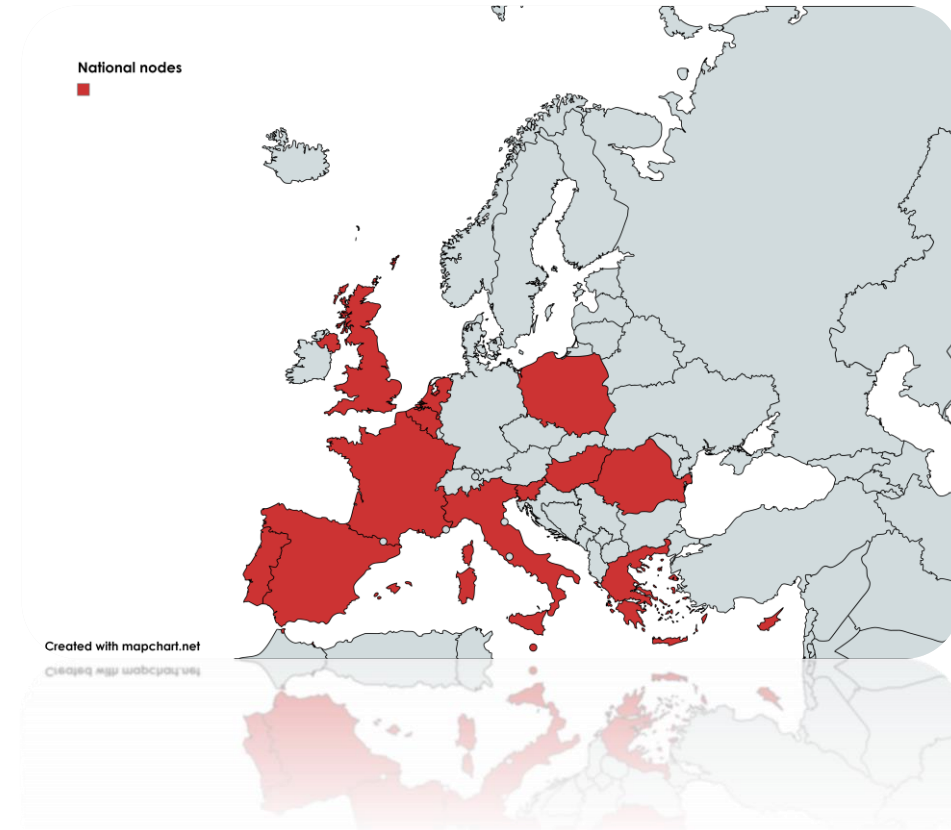
IMPLEMENTATION Phase

E-RIHS is made up of different member states and intergovernmental organisations. They contribute financially yearly in euros and recognise the authority of the European Court of Justice for any dispute related to an ERIC.

In each member state there is a National Node.

Each National Node is made up of different organisations and institutions. These list their services and offer them to the E-RIHS ERIC. Membership of the National Node is based on each Member states own standards.

Members of the E-RIHS UK National Node will contribute to the connection of world-class facilities and expertise across Europe to drive scientific excellence in the field of Heritage Science.



Structure of E-RIHS membership



IMPLEMENTATION Phase

E-RIHS members and observers are :

- EU Member States
- “Associated Countries”
- Other countries
- Intergovernmental organisations

They contribute financially yearly in euros and recognise the authority of the European Court of Justice for any dispute related to an ERIC.

Members

- Commit for 5 years initially
- Can vote in the General Assembly
- Have a national node
- Enjoy full rights

Observers

- Commit for 3 years
- Cannot vote
- Enjoy limited rights
- Pay a reduced contribution
- Endeavour to become a member

The UK has contributed to the set up of E-RHIS ERIC and will likely be listed as a founding member of E-RIHS ERIC in spite of Brexit!

What is the role of the E-RIHS UK?



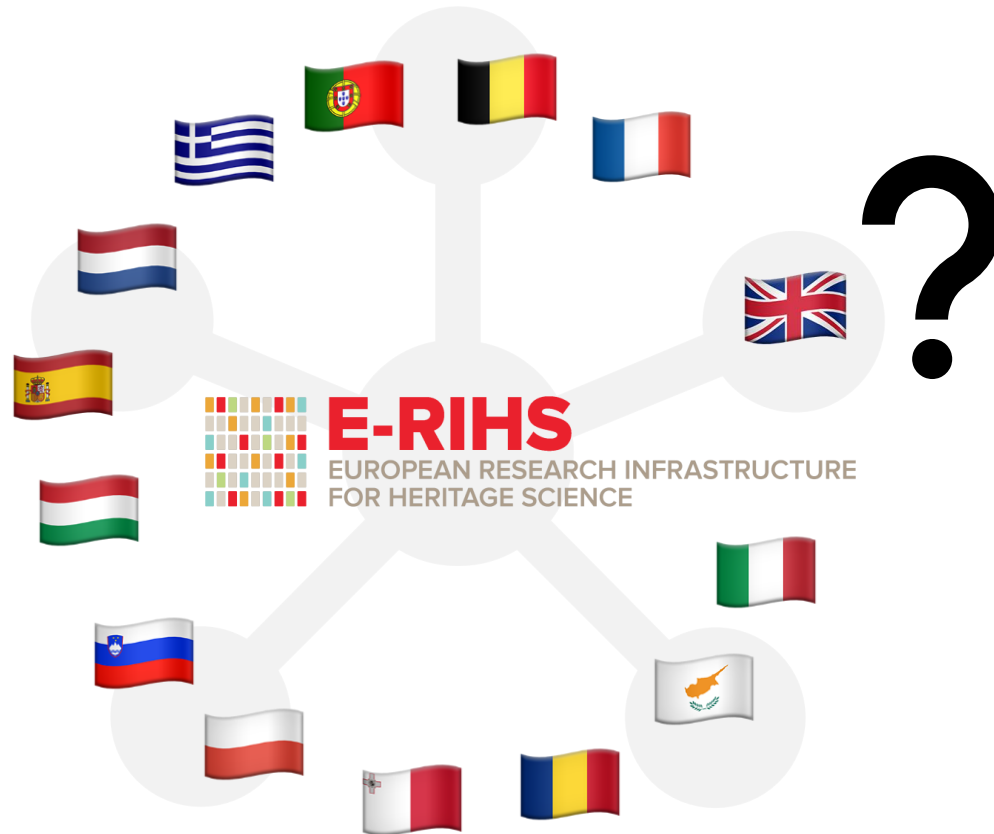
IMPLEMENTATION Phase

1. Be a national hub for UK Heritage Science with international focus.
2. It will coordinate E-RIHS UK to work in accordance with the obligations arising from the membership of the E-RIHS ERIC infrastructure.
3. Establish and coordinate of a system for **monitoring and managing the quality** of work in the UK related to E-RIHS.
4. Coordinates and promotes access to the infrastructure of E-RIHS UK members for users of the E-RIHS ERIC.
5. **Promotes Heritage Science**, and it fosters a culture of interdisciplinary collaboration by supporting researchers in the development of extensive, advanced, scientific and technological knowledge, including training.
6. Promotes innovation in scientific and research processes, services and governance in the field of Heritage Science, with an emphasis on **technological interoperability** and the harmonization of methods with the development of best practices.
7. It enables and promotes the **mobility** of researchers and users.
8. Facilitates and promotes **joint participation in national and European calls** of interest to Heritage Science and related funding opportunities and supports joint applications.
9. Establishes international partnerships with other European and non-European organisations in the field of Heritage Science and related fields.
10. Conducts **Marketing activities** on behalf of E-RIHS UK members.

How might E-RIHS UK be structured?



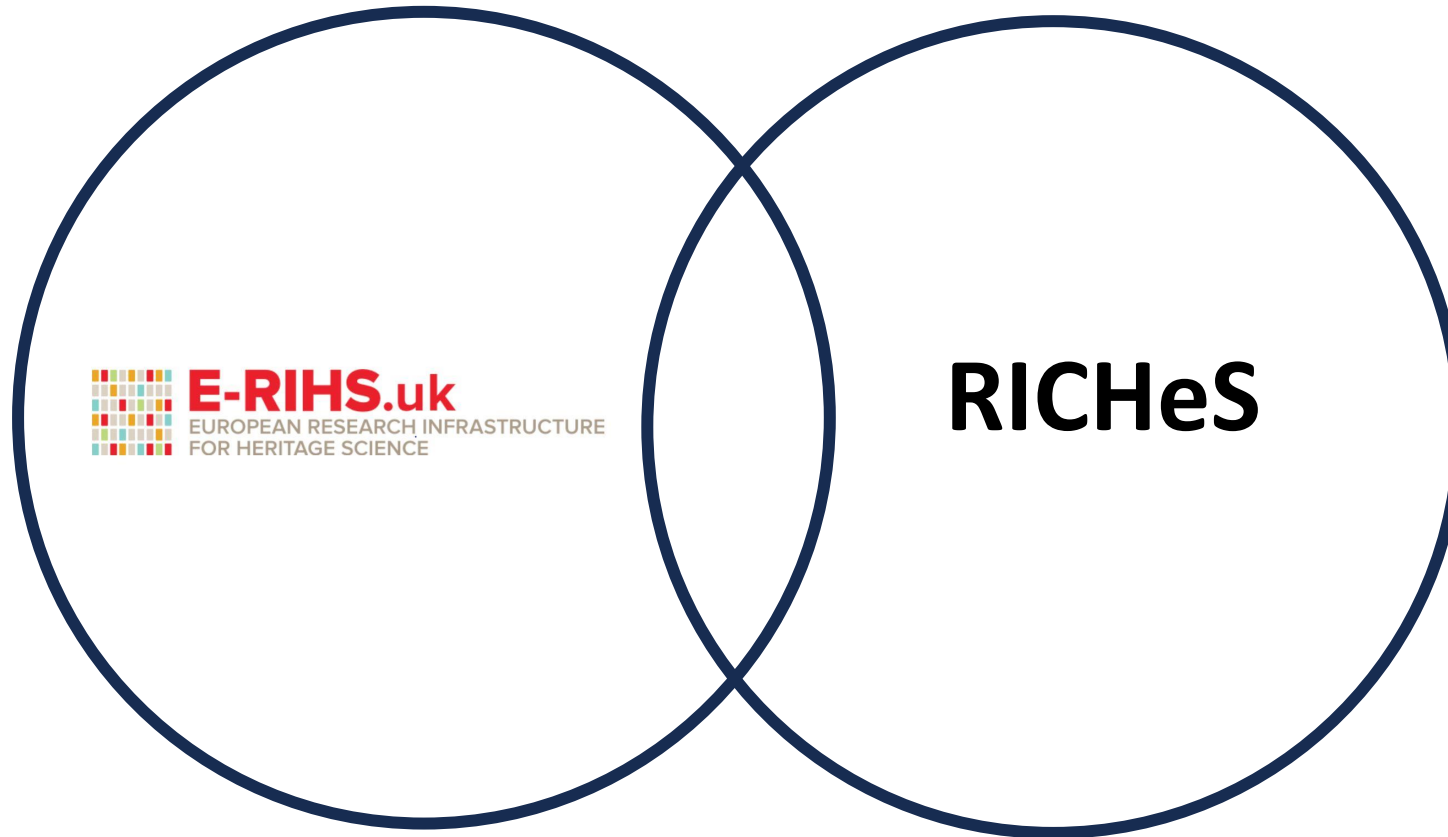
IMPLEMENTATION Phase



As the implementation phase of E-RIHS is coming to a close we are now beginning to structure our national set up in the context of the wider ERIC.

The set up of E-RIHS UK has yet to be formalised at this stage.

Though yet to be formalised transparency and fairness principles must be at the heart of any E-RIHS UK structure if we want it to be an effective and useful national body for Heritage Science.



The Research Infrastructure for Conservation and Heritage Science (RICHeS) also enables researchers to find and access equipment on facilities, expertise, reference collections, and research data relating to heritage science research across the UK.

Both E-RIHS UK and RICHeS aim to secure the Excellence of UK Heritage Science sector

There are clear opportunities for collaboration. Though there are no contractual obligations for RICHeS services to be listed as part of E-RIHS UK we hope many are interested!

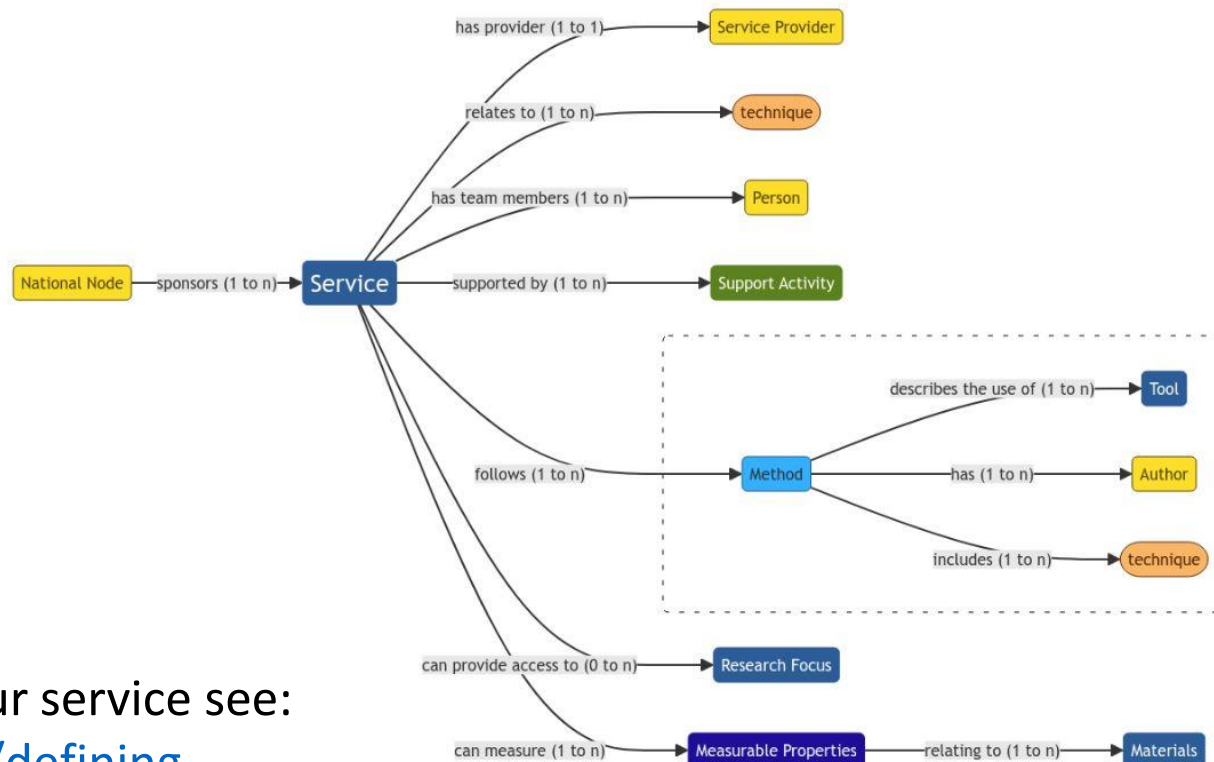
Registering a service with E-RIHS



It is now possible to define services with E-RIHS. Members of E-RIHS community can now register their services with the ERIHS Knowledge Base.

The knowledge Knowledge Base different categories of information:

- Organisations
- People
- Software
- Equipment
- Methods
- Services



For more information on how to register your service see:

<https://github.com/E-RIHS/help/blob/main/defining-services/README.md>

Once registered the service can be catalogued

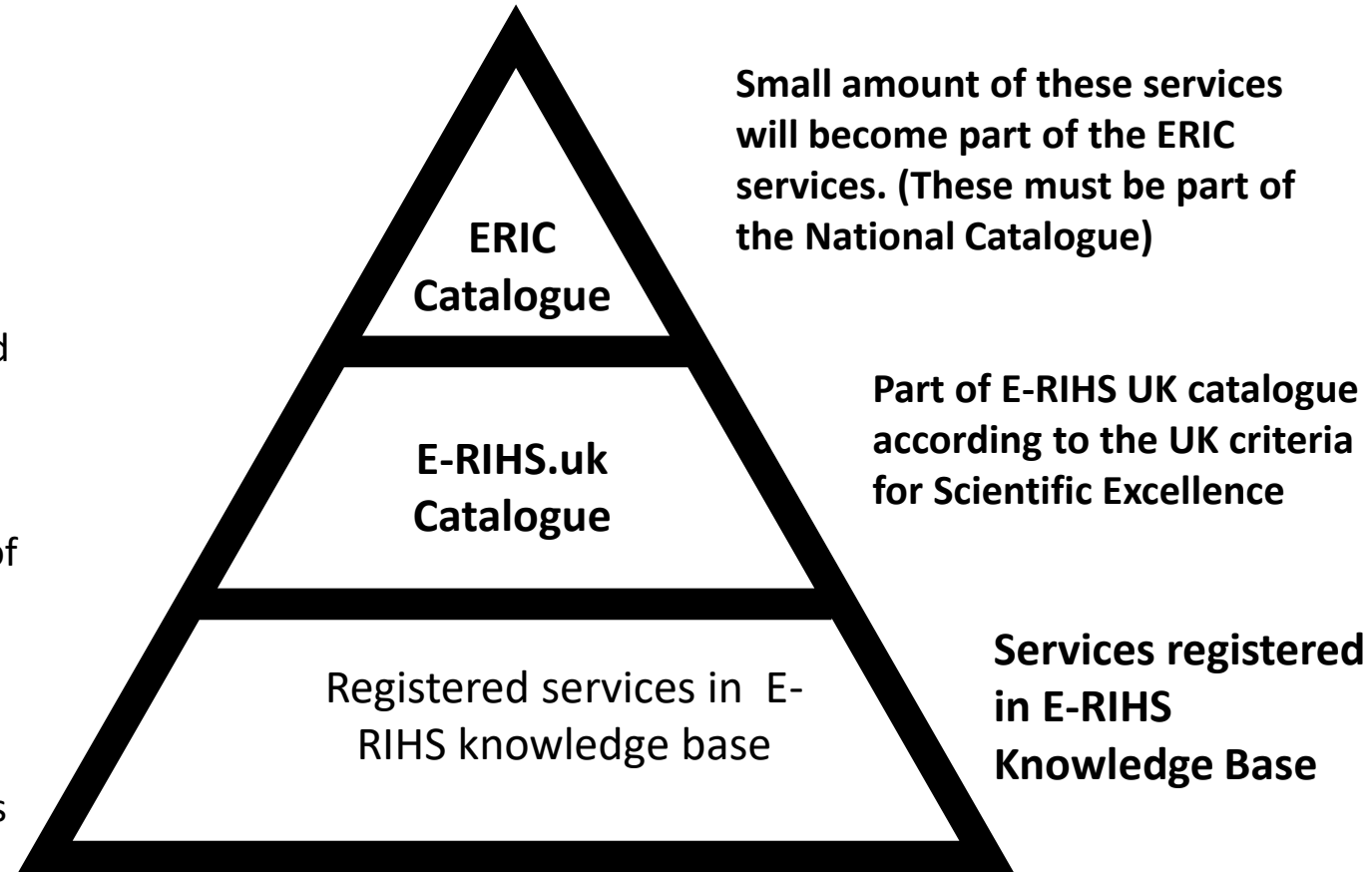


IMPLEMENTATION Phase

Once a service is defined it can be added to a catalogue of services.

- There can be different catalogues which the service becomes part of based on the criteria of the catalogue
- E-RIHS UK will have its own catalogue indicating services that are nationally significant and which have the capacity to offer excellent service internationally.
- Some of the Services offered by E-RIHS UK will be put forward to approved by the E-RIHS ERIC who will select their services based on the ERIC criteria, needs, and own peer review process. These will become part of the ERIC services. ERIC services are reviewed and often change based on the needs of the ERIC.

Having a service registered will facilitate cross catalogue recommendations. Users' applications can be recommended to different catalogues based on their research questions and needs



Users can then access E-RIHS services

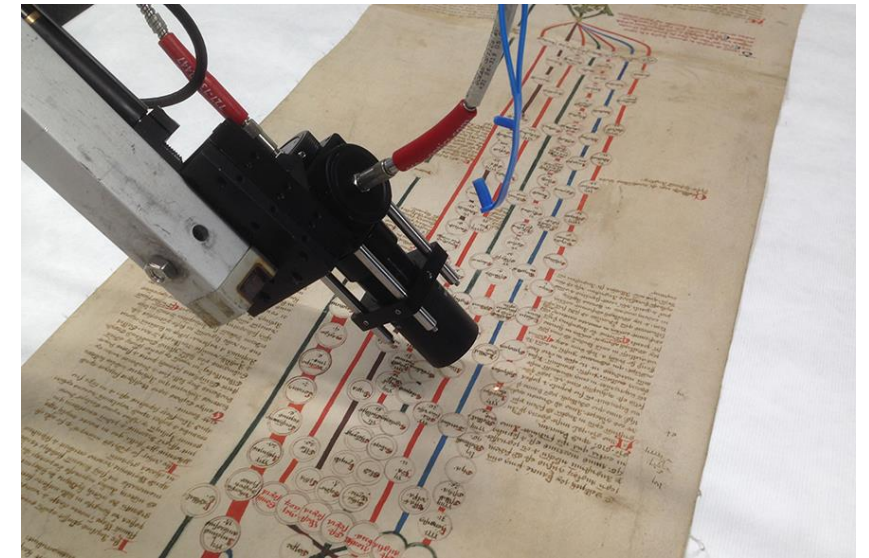


IMPLEMENTATION Phase

Users of E-RIHS can be individuals and teams from academic institutions, research centres, industry or other private and public institutions involved in Heritage Science.

Users apply for access E-RIHS online. Applications might be submitted in reply to calls regularly issued by E-RIHS or may be open calls for some resources.

E-RIHS has a Help Desk which will intervene in the various steps of proposal submission, helping users in the proposal compilation and directing them to the most appropriate platform/facility or catalogue of services.



Users applications are assessed:

- first by the E-RIHS central hub assessing if they meet the edibility criteria
- Then there is an assessment of feasibility at the service provider level
- Proposals then undergo a peer review by experts nominated by E-RIHS who rank proposals
- Then the central hub grants access to the highest scoring projects
- Central hub announces to applicants whether they are accepted or not and providers provide the service.

Register in the Knowledge base



IMPLEMENTATION Phase

At the outset of the E-RIHS ERIC if you were providing services to IPERION HS then these services will be automatically accepted as E-RIHS ERIC catalogue. However, these services will be reviewed in time.

While new services will go through the E-RIHS proposal pipeline.

We invite service providers to register their organisations and services with the E-RIHS knowledge Base



IPERION HS

Integrating Platforms for the European Research Infrastructure ON Heritage Science



FAQs from previous session



IMPLEMENTATION Phase

- *What are the criteria of accessing the different services?*

We are aware that different service providers have different criteria of academic access modes which E-RIHS UK will have to incorporate or meet as well if these services providers will be able to meet service requirements. We are currently working on defining this criteria.

- *Position regarding commercial providers?*

These providers will have to commit to academic projects and the outputs of the project depending on whether they can receive E-RIHS funding

- *Terminology to better reflect user-provider relationship.*

No terminology is set in stone, but any E-RIHS UK terms will have to correspond to the language of the ERIC

- Next steps: possible governance/decision-making models, timeline.



IPERION HS

Integrating Platforms for the European
Research Infrastructure ON Heritage
Science



Round up



IMPLEMENTATION Phase

- The aims and role of the E-RIHS ERIC
- Shown the benefits of E-RIHS membership,
- outlined the role of the E-RIHS UK national node,
- And outlined the data requirements for registering

We hope you have plenty of questions and are interested in becoming part of E-RIHS UK!



E-RIHS.uk

EUROPEAN RESEARCH INFRASTRUCTURE
FOR HERITAGE SCIENCE

SEAHA (2024) Mobile heritage lab Available at: <https://www.ucl.ac.uk/seaha-cdt/mobile-heritage-lab> (Accessed: 15 July 2024).



E-RIHS

EUROPEAN RESEARCH INFRASTRUCTURE
FOR HERITAGE SCIENCE



Josep Grau-Bove

National Coordinator E-RIHS UK

Deputy Director Institute for Sustainable Heritage

University College London

josep.grau.bove@ucl.ac.uk

Thanks
for your attention

IMPLEMENTATIONPhase

For more information on E-RIHS UK:

<https://e-rihs.ac.uk/>

For more information on E-RIHS ERIC:

www.e-rihs.eu

Virgili, V. (2023). [iRIS] The European Research Infrastructure for Heritage Science. Zenodo.

<https://doi.org/10.5281/zenodo.7895217>

Pacheco, C. (2020) E-RIHS PP User strategy and access policies.

<https://doi.org/10.5281/zenodo.4071803>

